

資料2 【参考縦覧図書】標準断面図・縦断面図

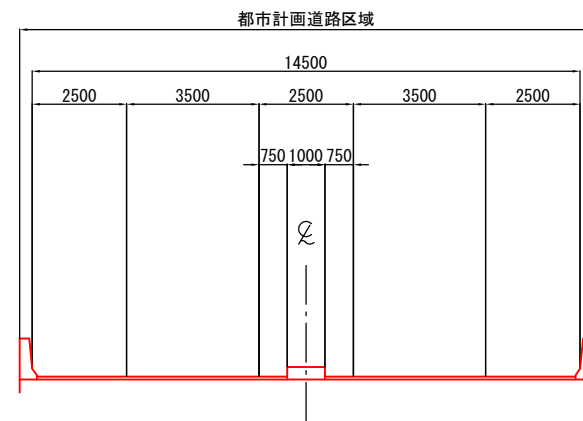
標準断面図

S=1:200

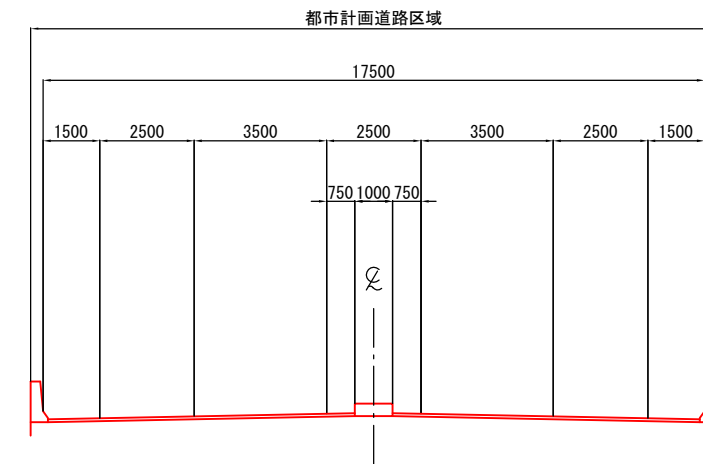
1.5.8 名神湾岸連絡線

単路部

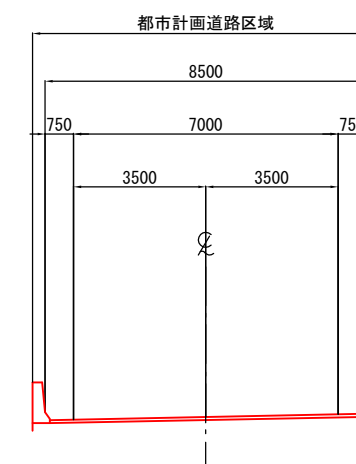
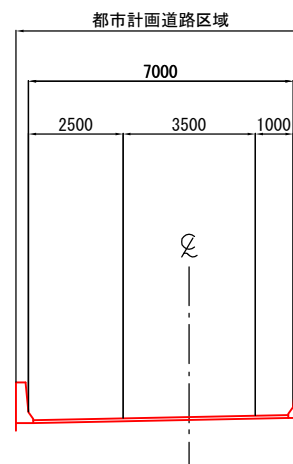
高架部



橋梁部



JCT部

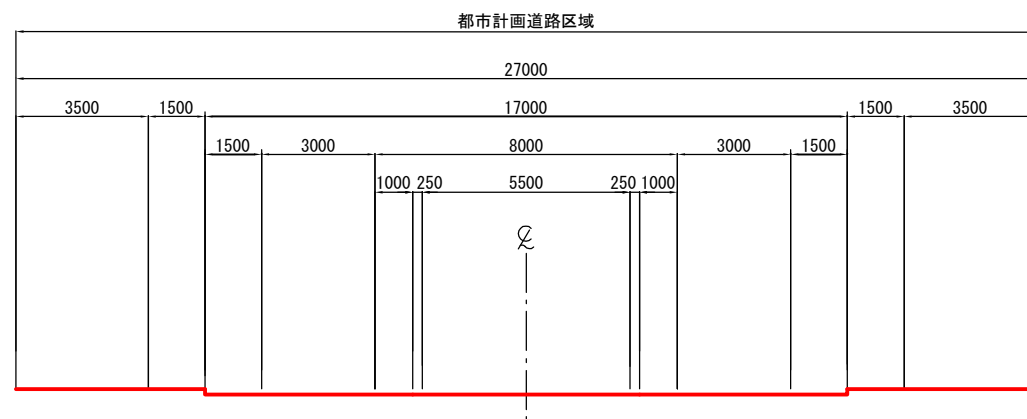


標準断面図

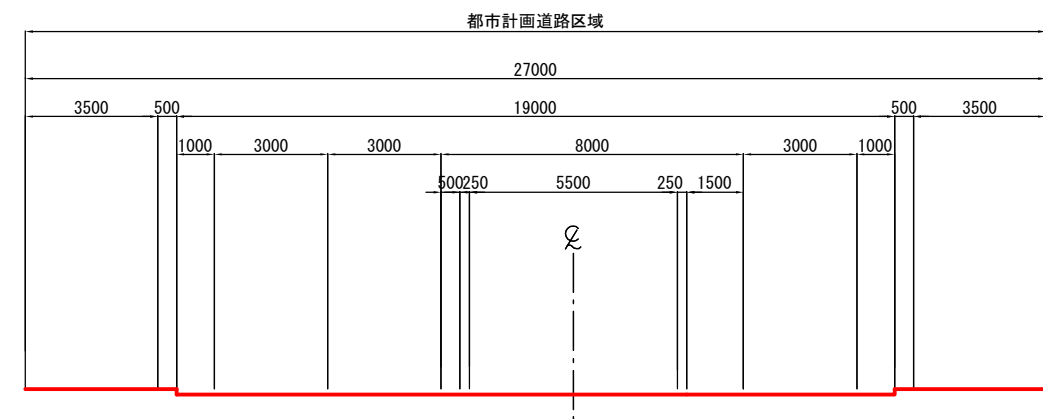
S=1:200

3.3.154 今津東線

一般部



交差点部



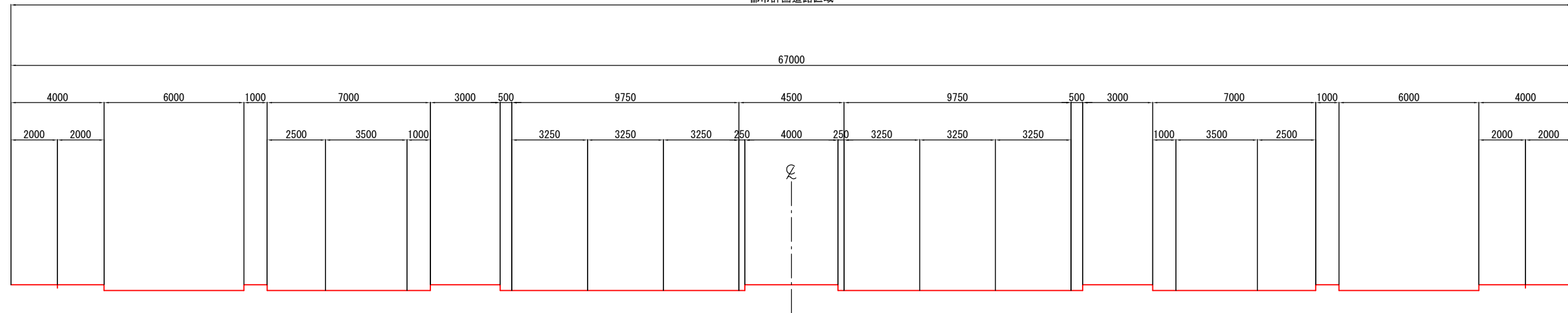
標準断面図

S=1:200

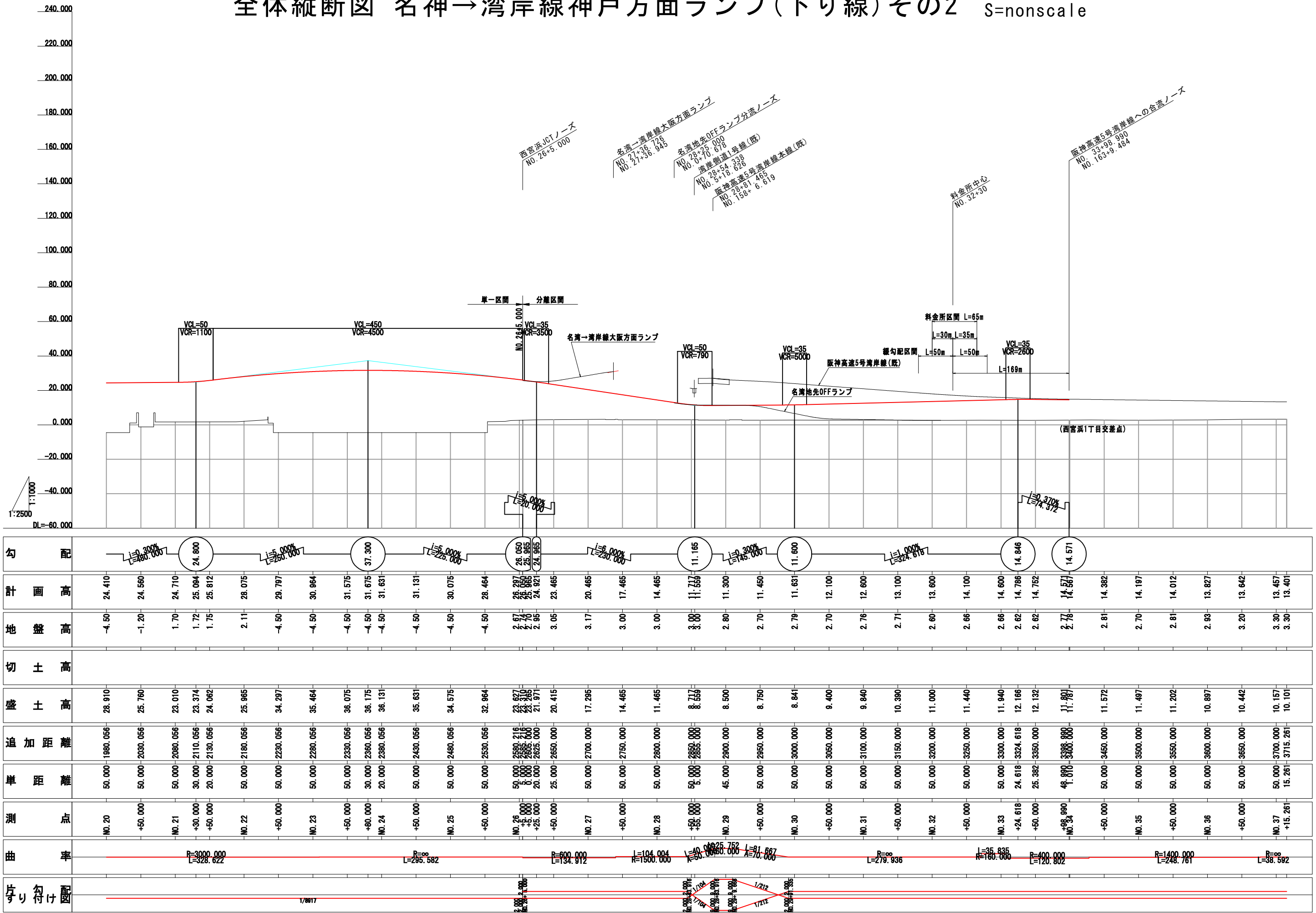
3.1.2 浜手幹線

西宮インター部

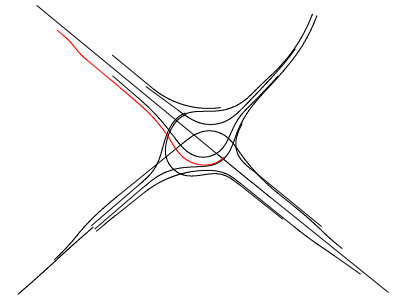
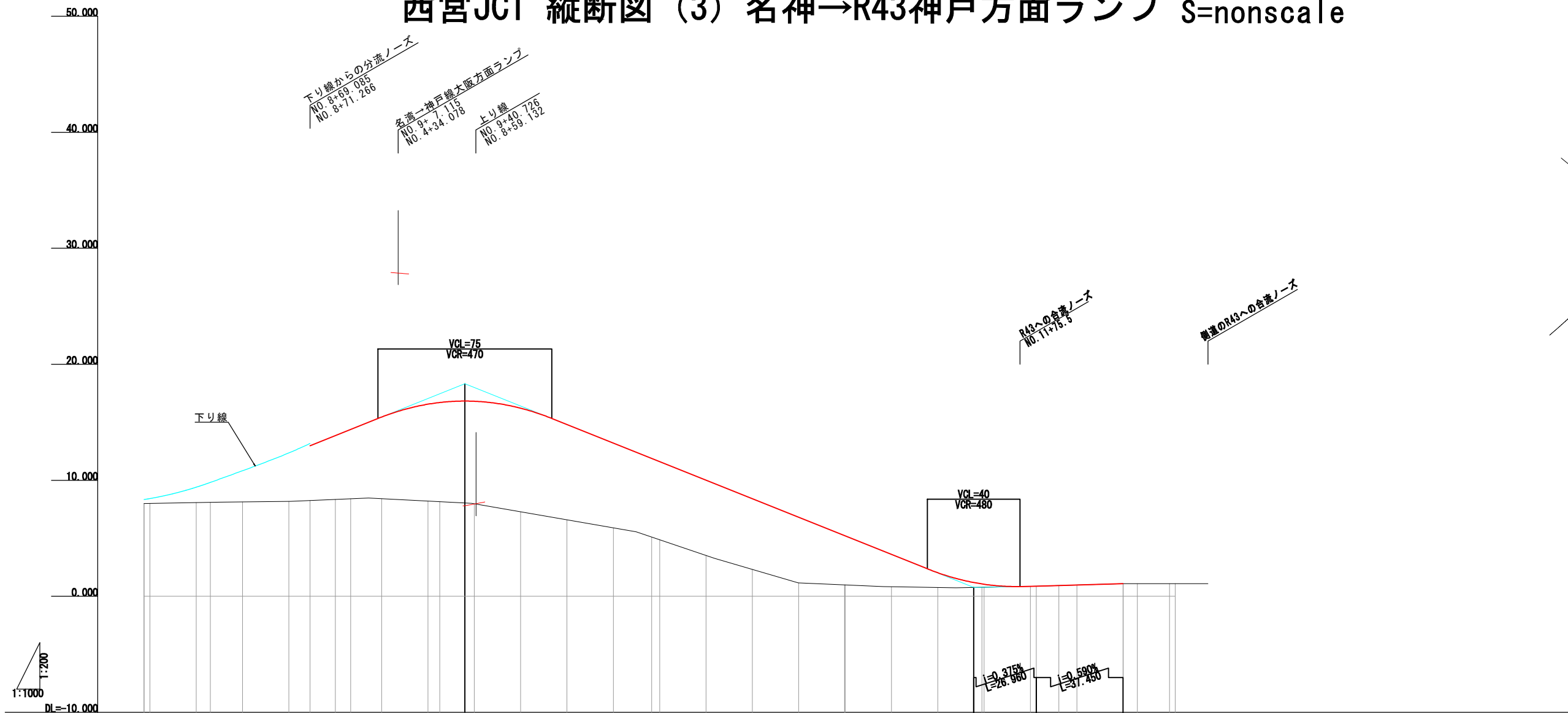
都市計画道路区域



全体縦断図 名神→湾岸線神戸方面ランプ(下り線)その2 S=nonscale



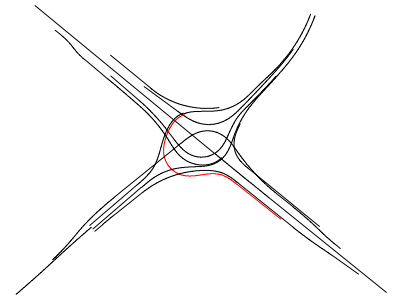
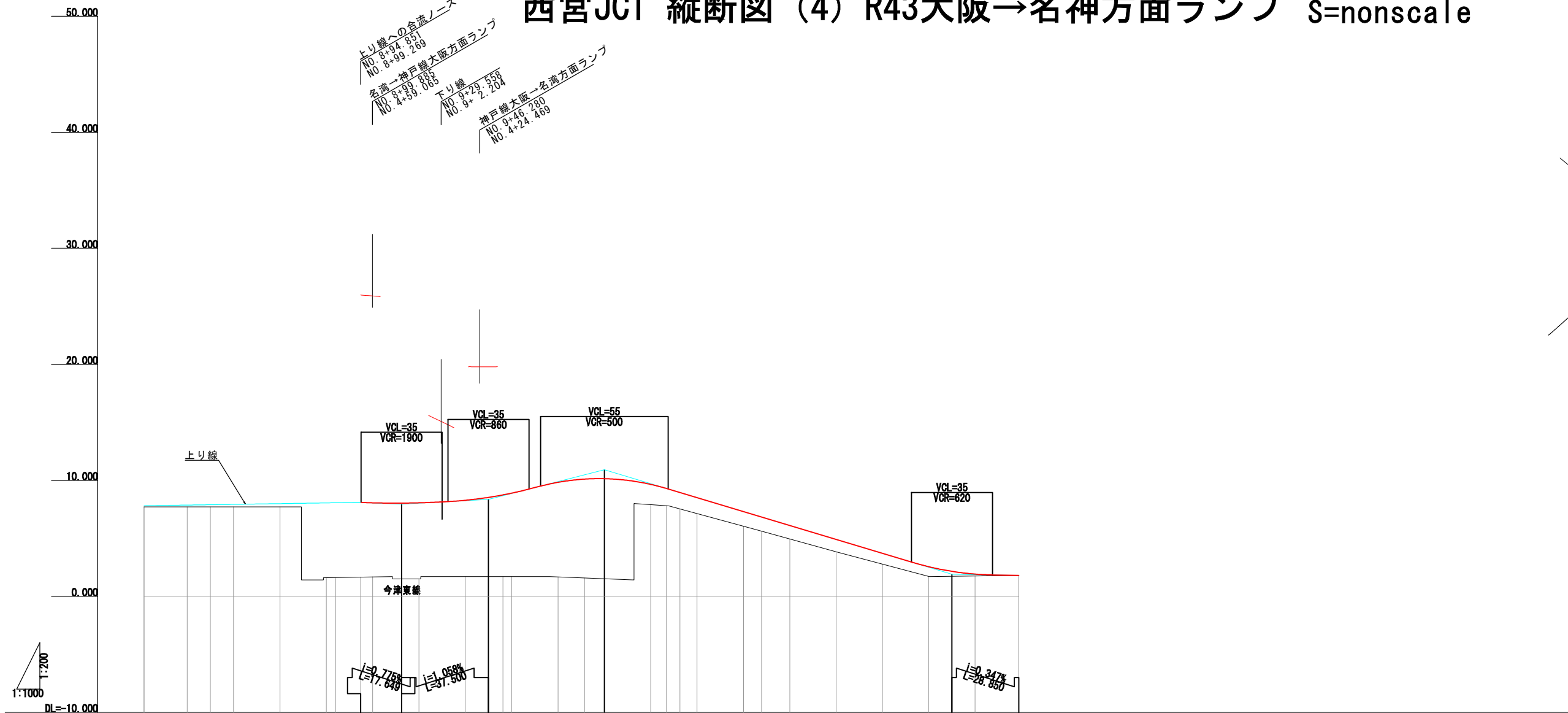
西宮JCT 縦断図 (3) 名神→R43神戸方面ランプ S=nonscale



勾配	12.981		18.330		0.765		0.866		1.087																							
計画高		12.981	13.854	14.383	15.452	16.558	16.704	16.830	16.812	16.212	14.805	13.205	11.884	11.885	10.005	8.405	6.805	5.262	3.605	2.026	1.184	1.083	0.866	0.924	0.970	1.087	1.087	1.08				
地盤高	8.07	8.07	8.10	8.13	8.19	8.26	8.35	8.40	8.41	8.20	8.15	8.04	7.97	7.28	6.59	5.90	5.87	3.52	2.32	1.16	0.98	0.82	0.76	0.77	0.78	0.87	0.92	0.97	1.08	1.08	1.08	
切土高																								0.833		0.833						
盛土高					4.721		5.504	5.983	7.042	8.358	8.554	8.790	8.842	8.932	8.215	7.305	6.744	6.485	6.085	5.645	4.225	2.785	1.266	0.414	0.253	0.004						
追加距離	207.600	820.000	826.108	840.000	860.000	869.085	880.000	886.610	900.000	920.000	925.071	935.943	940.000	960.000	980.000	1000.000	1016.518	1040.000	1060.000	1080.000	1098.798	1108.000	11140.000	1155.500	1166.000	1182.000	1192.233	1200.000	1218.810	1226.126	1242.000	
単距離	2.998	20.000	6.108	13.892	20.000	9.085	10.915	6.610	13.390	20.000	5.071	10.871	4.058	20.000	20.000	20.000	16.518	20.000	20.000	20.000	19.298	0.200	20.000	15.500	0.884	20.000	9.773	7.767	18.810	6.126	12.866	
測点	BC 1-0	+20.000	EBC 1-1	+40.000	+60.000	+69.085	+80.000	KE 1-1	NO. 9	+20.000	KA 2-1	+35.943	+40.000	+60.000	+80.000	NO. 10	EBC 2-1	+20.000	+40.000	+60.000	+80.000	EC 1-0	+20.000	+40.000	+55.500	+60.000	+80.000	BC 4-0	NO. 12	+18.810	EC 4-0	EP 40.000
曲率	R=28.587 L=50.000	R=60.502 L=95.000	R=38.462 L=38.000	R=300.000 L=91.249	R=3000.000 L=83.281	R=59.267	R=33.167 L=140.000	R=140.000 L=33.893	R=16.362																							
片り勾け図	1/284		1/216		1/214		1/143		1/114		1/114		1/114		1/114		1/114		1/114		1/114		1/114		1/114		1/114		1/114		1/114	

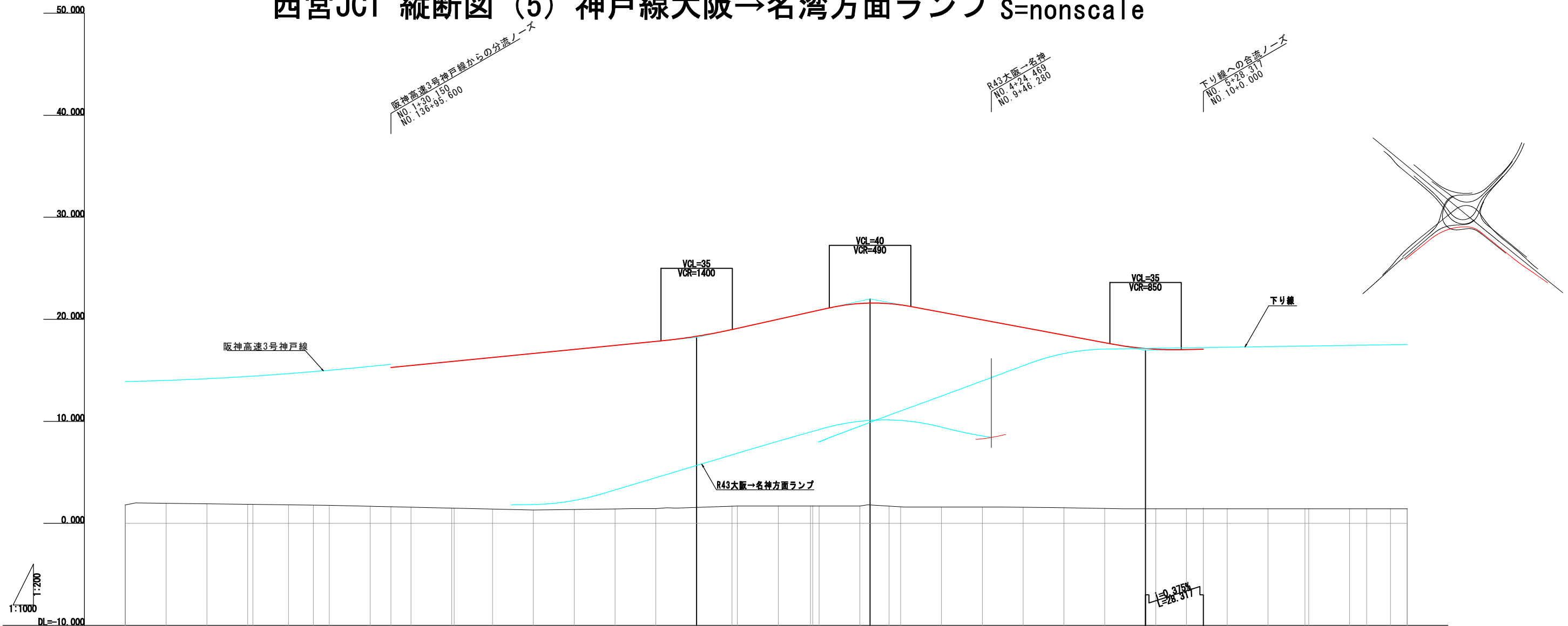
西宮JCT 縦断図 (4) R43大阪→名神方面ランプ S=nonscale

上り線への合流ノーズ
 NO. 8+94.851
 NO. 8+99.269
 名神→神戸線大阪方面ランプ
 NO. 8+19.863
 NO. 4+39.863
 下り線
 NO. 9+24.539
 NO. 9+2.204
 神戸線大阪→名神方面ランプ
 NO. 9+46.280
 NO. 4+24.469



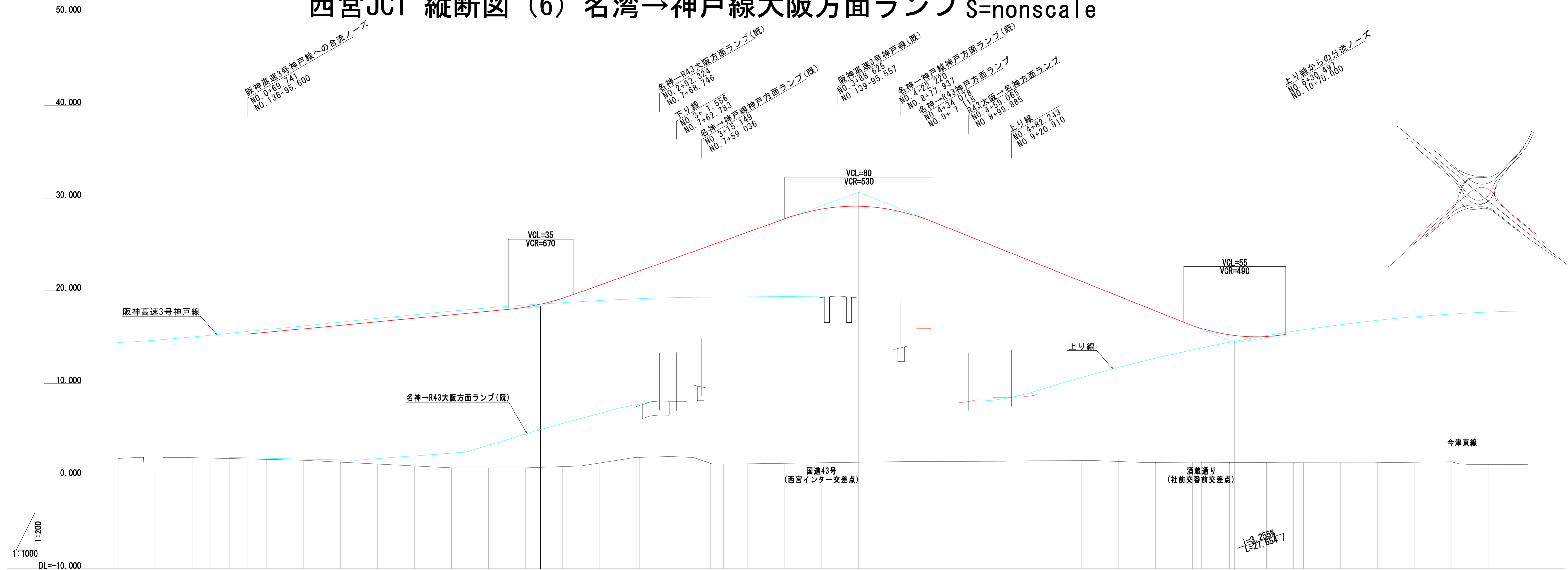
勾配		8.087	7.950	8.347	10.900	1.900	1.800	
計画高		8.087	8.054	8.030	8.056	8.274	8.524	8.737
地盤高		1.62	1.65	1.67	1.50	1.50	1.70	1.70
切土高								
盛土高		6.437	6.384	6.530	6.556	6.574	6.824	7.037
追加距離		801.397	820.000	829.965	840.000	860.000	880.000	883.968
単距離		0.000	18.603	9.965	10.035	20.000	20.000	3.968
測点		BC 1-0	+20.000	EBC 1-1	+40.000	+60.000	+80.000	+84.851
曲率		R=20.000	R=100.000	R=50.000	L=35.280	L=35.280	L=35.280	L=111.003
片すり勾配			1/174	1/224	1/174	1/224	1/224	1/211

西宮JCT 縦断図 (5) 神戸線大阪→名湾方面ランプ S=nonscale



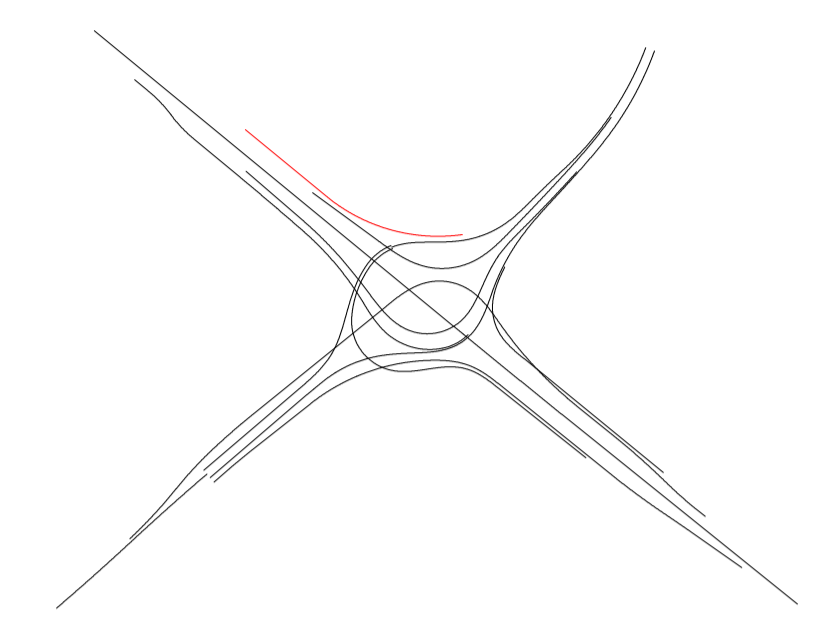
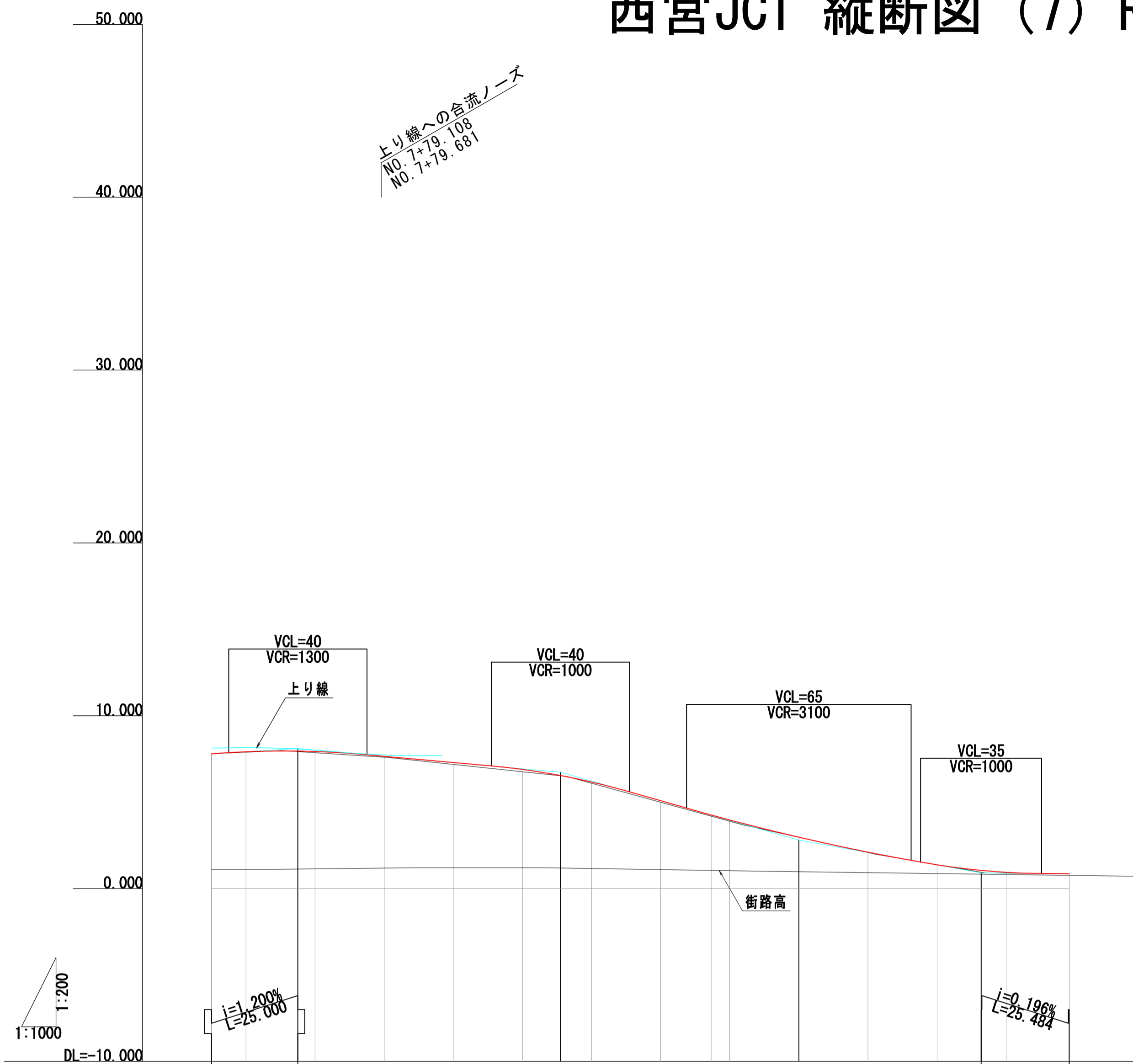
勾配	計画高	地盤高	切土高	盛土高	追加距離	単距離	測点	曲率	片り勾り配
		1.80			0.000	0.000	BP		
		1.96			20.000	20.000	+20.000		
		1.91			40.000	20.000	+40.000		
		1.85			62.000	22.000	+60.000		
		1.81			80.000	17.441	+80.000		
		1.76			92.167	12.167	BC 2-0		
		1.76			100.000	7.833	NO. 1		
		1.67			120.000	20.000	+20.000		
		1.62		13.662	130.150	10.150	+30.150		
		1.58		13.896	140.000	9.850	+40.000		
		1.48		14.399	160.000	20.000	+60.000		
		1.48		14.412	161.213	1.213	EC 2-0		
		1.39		14.872	180.000	18.787	+80.000		
		1.30		15.355	200.000	20.000	NO. 2		
		1.35		15.698	220.000	20.000	+20.000		
		1.40		16.041	240.000	20.000	+40.000		
		1.45		16.384	260.000	20.000	+60.000		
		1.57		16.765	280.000	20.000	+80.000		
		1.68		17.315	297.298	17.298	KA 3-1		
		1.70		18.302	320.000	20.000	+20.000		
		1.70		18.002	335.761	15.761	KE 3-1		
		1.70		18.150	346.000	3.000	EE 3-1		
		1.70		19.648	360.000	20.000	+60.000		
		1.80		19.791	365.000	5.000	+65.000		
		1.69		19.846	374.294	9.294	KAE 3-1		
		1.62		19.794	380.000	5.706	+80.000		
		1.60		19.093	400.000	20.000	NO. 4		
		1.58		18.556	420.000	20.000	+20.000		
		1.57		17.628	440.000	20.000	+40.000		
		1.52		16.931	460.000	20.000	+60.000		
		1.46		16.244	480.000	20.000	+80.000		
		1.43		15.707	500.000	20.000	NO. 5		
		1.43		15.637	505.090	5.090	EC 3-0		
		1.43		15.602	520.000	14.910	+20.000		
		1.43		15.602	528.317	8.317	+28.317		
		1.43		15.602	540.000	11.683	+40.000		
		1.43		15.602	560.000	20.000	+60.000		
		1.43		15.602	578.095	18.095	BC 4-0		
		1.43		15.602	600.000	20.000	NO. 6		
		1.43		15.602	608.316	8.316	EC 4-0		
		1.43		15.602	620.000	11.684	+20.000		
		1.43		15.602	628.233	8.233	EP		

西宮JCT 縦断図 (6) 名湾→神戸線大阪方面ランプ S=nonscale



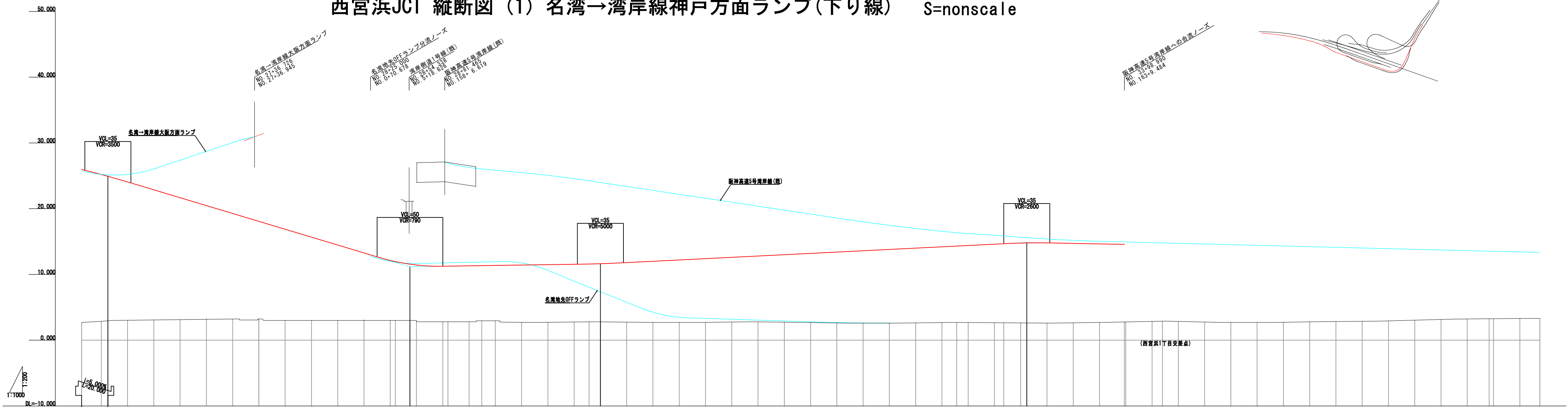
勾配	計画高	地盤高	切土高	盛土高	追加距離	単距離	測点	曲率	片り勾付け
15.307	1.90				0.000	0.000	BP	R=∞	
15.502	2.00				11.842	11.842	BC 1-0	L=11.842	
15.882	1.00				20.000	8.158	+20.000	R=400.000	
16.262	1.98				40.000	20.000	+40.000	R=800.000	
16.371	1.93				48.803	9.803	BC 2-0	L=75.923	
16.642	1.88				60.000	10.197	+60.000	R=∞	
17.022	1.84		13.467		69.741	9.741	+69.741	L=37.982	
17.169	1.79		13.712		80.000	10.259	+80.000	R=400.000	
17.402	1.70		14.182		100.000	20.000	NO. 1	L=75.923	
17.782	1.50		14.762		120.000	20.000	+20.000	R=∞	
18.228	1.44		14.931		125.727	5.727	EC 2-0	L=42.028	
18.546	1.30		15.342		140.000	14.273	+40.000	R=800.000	
19.191	1.10		15.922		160.000	20.000	+60.000	R=∞	
20.599	1.02		16.149		167.755	7.755	BC 3-0	L=113.684	
23.462	0.90		16.502		180.000	12.245	+80.000	R=400.000	
24.894	0.90		16.882		200.000	20.000	NO. 2	L=44.931	
25.387	0.95		17.328		220.000	20.000	+20.000	R=50.000	
26.325	1.03		17.596		228.08	8.108	+28.108	L=40.455	
27.757	1.41		18.161		240.000	11.882	+40.000	R=55.000	
28.471	2.00	2.00	19.189		260.000	20.000	+60.000	L=44.931	
28.809	2.09	2.09	20.338		280.000	20.000	+80.000	R=50.000	
29.104	1.37	1.37	21.372		300.000	18.561	NO. 3	L=167.700	
29.749	1.30	1.30	23.524		320.000	20.000	+20.000	R=∞	
28.624	1.33	1.33	24.087		326.894	6.894	KE 4-1	L=35.455	
27.420	1.38	1.38	24.995		340.000	13.106	+40.000	R=55.000	
25.820	1.42	1.42	26.377		360.000	20.000	+60.000	L=44.931	
24.220	1.44	1.44	27.051		371.824	11.824	KE 4-2	R=50.000	
22.620	1.44	1.44	27.369		380.000	8.176	+80.000	L=35.455	
21.020	1.49	1.49	27.614		400.000	20.000	NO. 4	R=∞	
19.420	1.54	1.54	27.689		417.278	17.278	KA 4-2	L=35.455	
17.820	1.56	1.56	27.689		420.000	2.722	+20.000	R=50.000	
16.242	1.56	1.56	25.840		440.000	20.000	+40.000	L=167.700	
15.917	1.59	1.59	24.230		460.000	20.000	+60.000	R=∞	
15.242	1.61	1.61	22.610		480.000	20.000	+80.000	L=167.700	
15.166	1.65	1.65	20.970		500.000	20.000	NO. 5	R=800.000	
15.293	1.66	1.66	19.360		520.000	20.000	+20.000	L=49.486	
15.060	1.57	1.57	17.850		540.000	20.000	+40.000	R=400.000	
15.293	1.47	1.47	16.350		560.000	20.000	+60.000	L=59.224	
15.293	1.50	1.50	14.742		580.000	20.000	+80.000	R=∞	
15.293	1.48	1.48	14.427		584.979	4.979	BC 5-0	L=57.488	
15.293	1.48	1.48	13.766		600.000	15.021	NO. 6	R=500.000	
15.060	1.45	1.45	13.610		602.843	2.843	+2.843	L=49.486	
15.293	1.44	1.44	13.853		620.000	17.157	+20.000	R=400.000	
15.293	1.44	1.44	13.853		630.027	10.027	+30.027	R=∞	
15.293	1.44	1.44	13.853		634.666	4.639	EB 6-1	L=59.224	
15.293	1.44	1.44	13.853		640.000	5.335	+40.000	R=500.000	
15.293	1.43	1.43	13.610		660.000	20.000	+60.000	L=57.488	
15.293	1.44	1.44	13.853		680.000	20.000	+80.000	R=∞	
15.293	1.48	1.48	13.690		693.690	13.690	BC 6-0	L=57.488	
15.293	1.49	1.49	13.690		700.000	6.310	NO. 7	R=500.000	
15.293	1.54	1.54	13.690		720.000	20.000	+20.000	L=57.488	
15.293	1.26	1.26	13.690		740.000	20.000	+40.000	R=∞	
15.293	1.24	1.24	13.690		760.000	20.000	+60.000	L=57.488	
15.293	1.24	1.24	13.690		761.188	1.188	EP	R=500.000	

西宮JCT 縦断図 (7) R43神戸→名神方面ランプ S=nonscale



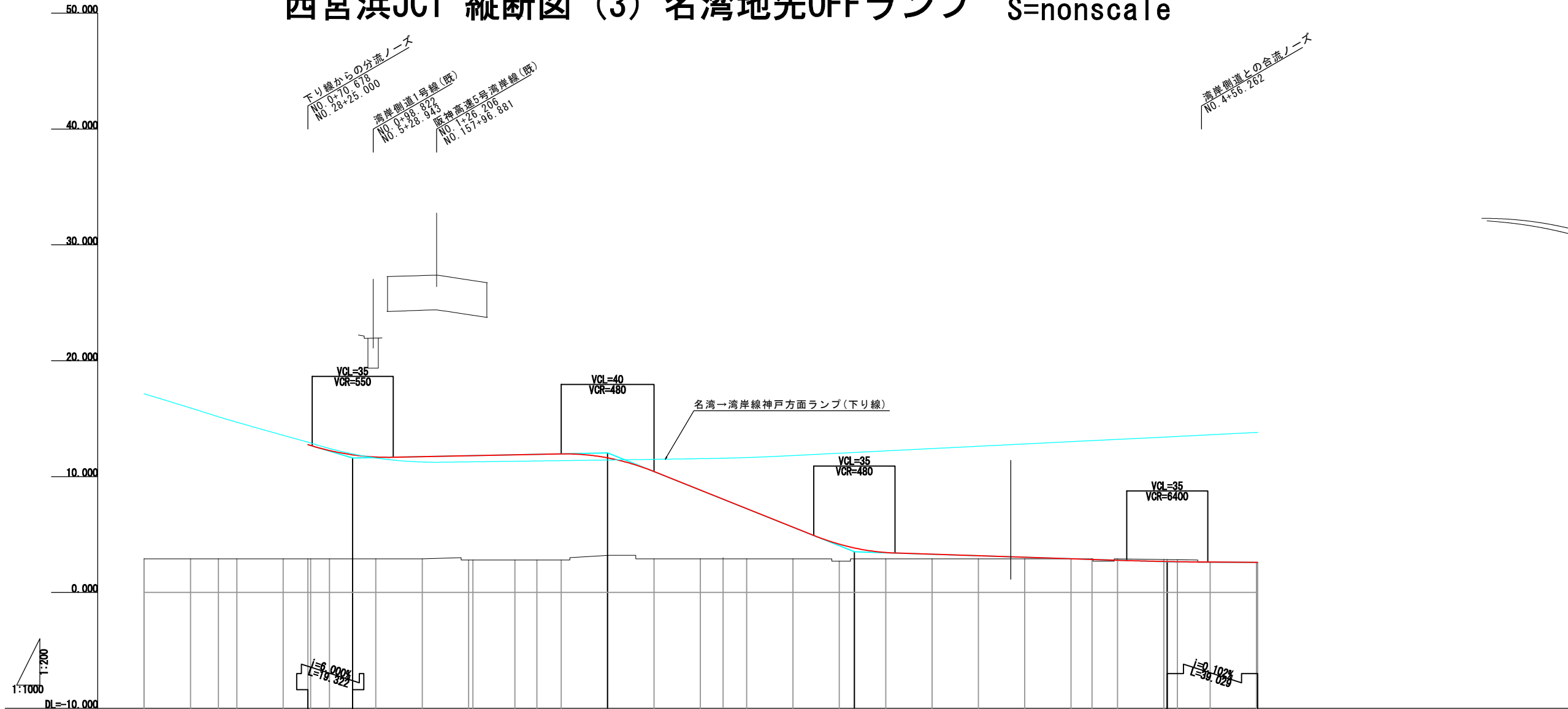
勾配	7.800	8.100	6.732	2.799	0.900	0.850												
計画高	7.800	7.911	7.950	7.926	7.650	7.290	6.891	6.537	6.160	5.079	4.254	3.964	2.970	2.104	1.370	1.049	0.937	0.850
地盤高	7.80	7.89	7.92	7.85	7.59	7.18	6.75	6.52	6.09	4.99	4.18	3.89	2.96	2.08	1.37	0.94	0.89	0.85
切土高																		
盛土高		0.021	0.030	0.076	0.060	0.110	0.141	0.017	0.070	0.089	0.074	0.074	0.010	0.024		0.109	0.047	
追加距離	730.000	740.000	755.000	760.000	780.000	800.000	820.000	831.000	840.000	860.000	874.617	880.000	900.000	920.000	940.000	952.750	960.000	978.234
単距離	0.000	10.000	15.000	5.000	20.000	20.000	11.000	9.000	20.000	14.617	5.383	20.000	20.000	20.000	20.000	12.750	7.250	18.234
測点	BC 1-0	+40.000	+55.000	+60.000	+80.000	NO.8	+20.000	+31.000	+40.000	+60.000	EC 1-0	+80.000	NO.9	+20.000	+40.000	+52.750	+60.000	EP
曲率	R=44.617 L=75.600										R=80 L=103.617							
片勾り	No. 75.600 1/381										No. 103.617 1/381							

西宮浜JCT 縦断図 (1) 名湾→湾岸線神戸方面ランプ(下り線) S=nonscale



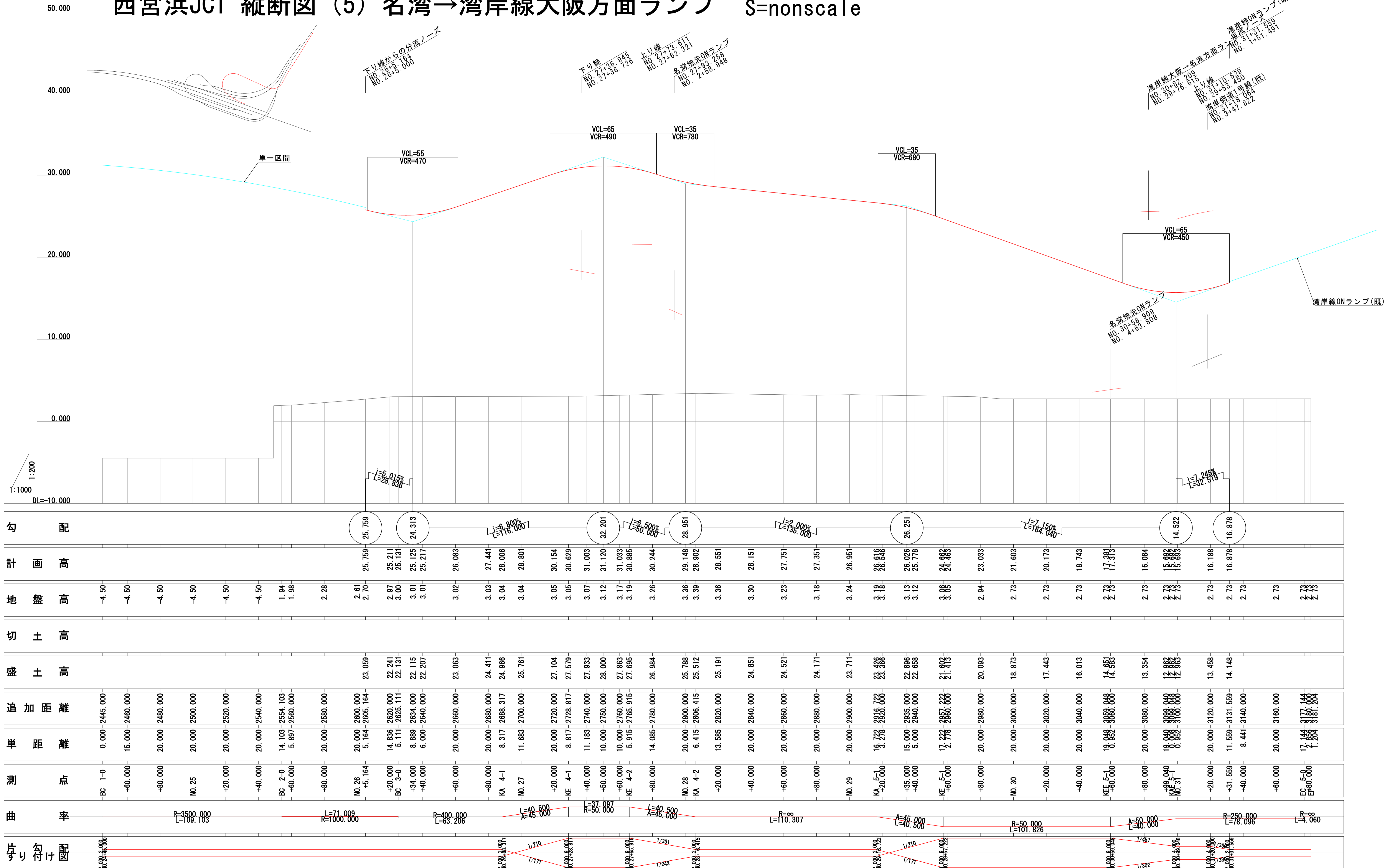
勾配	計画高	地盤高	切土高	盛土高	追加距離	単距離	測点	曲率	片り勾り
25.965	25.965	2.70		23.265	0.000	0.000	BC 1-0		2.000
25.193	25.193	2.87		22.323	15.000	15.000	+20.000		2.000
24.927	24.927	2.95		21.971	5.000	5.000	+25.000		2.000
24.064	24.064	3.03		21.034	15.000	15.000	+40.000		2.000
22.865	22.865	3.07		19.795	20.000	20.000	+60.000		2.000
21.665	21.665	3.12		18.545	20.000	20.000	+80.000		2.000
20.465	20.465	3.17		17.295	20.000	20.000	NO. 27		2.000
19.265	19.265	3.22		16.045	20.000	20.000	+20.000		2.000
18.070	18.070	3.22		14.850	18.812	18.812	BC 2-0		2.000
16.865	16.865	3.00		13.865	18.812	18.812	+40.000		2.000
15.665	15.665	3.00		12.665	20.000	20.000	+60.000		2.000
14.465	14.465	3.00		11.465	20.000	20.000	+80.000		2.000
13.265	13.265	3.00		10.265	20.000	20.000	NO. 28		2.000
12.120	12.120	3.00		9.120	20.000	20.000	+20.000		2.000
11.652	11.652	3.00		8.652	20.000	20.000	+40.000		2.000
11.559	11.559	3.00		8.559	3.915	3.915	KA/E 2-1		2.000
11.432	11.432	3.00		8.432	11.095	11.095	+55.000		2.000
11.240	11.240	2.80		8.440	5.000	5.000	+60.000		2.000
11.252	11.252	2.80		8.452	20.000	20.000	KEE 2-1		2.000
11.300	11.300	2.80		8.500	3.915	3.915	NO. 29		2.000
11.329	11.329	2.95		8.379	16.095	16.095	+20.000		2.000
11.360	11.360	2.95		8.410	9.668	9.668	KE 2-1		2.000
11.420	11.420	2.72		8.700	10.322	10.322	+20.000		2.000
11.480	11.480	2.72		8.760	20.000	20.000	+40.000		2.000
11.540	11.540	2.77		8.770	20.000	20.000	+60.000		2.000
11.562	11.562	2.79		8.792	20.000	20.000	+80.000		2.000
11.631	11.631	2.79		8.841	11.335	11.335	KA 2-1		2.000
11.800	11.800	2.75		9.050	8.665	8.665	NO. 30		2.000
12.000	12.000	2.70		9.300	30.000	30.000	+20.000		2.000
12.200	12.200	2.70		9.500	20.000	20.000	+40.000		2.000
12.400	12.400	2.71		9.690	20.000	20.000	+60.000		2.000
12.600	12.600	2.76		9.840	20.000	20.000	+80.000		2.000
12.800	12.800	2.79		10.010	20.000	20.000	NO. 31		2.000
13.000	13.000	2.74		10.280	20.000	20.000	+20.000		2.000
13.200	13.200	2.68		10.520	20.000	20.000	+40.000		2.000
13.400	13.400	2.62		10.780	20.000	20.000	+60.000		2.000
13.600	13.600	2.60		11.000	20.000	20.000	+80.000		2.000
13.800	13.800	2.60		11.200	20.000	20.000	NO. 32		2.000
14.000	14.000	2.63		11.370	20.000	20.000	+20.000		2.000
14.200	14.200	2.68		11.520	20.000	20.000	+40.000		2.000
14.313	14.313	2.70		11.613	20.000	20.000	+60.000		2.000
14.400	14.400	2.68		11.720	11.271	11.271	BC 3-0		2.000
14.600	14.600	2.66		11.940	8.729	8.729	+80.000		2.000
14.671	14.671	2.65		12.021	20.000	20.000	NO. 33		2.000
14.768	14.768	2.63		12.138	20.000	20.000	+20.000		2.000
14.786	14.786	2.62		12.166	7.106	7.106	BC 4-0		2.000
14.788	14.788	2.60		12.188	12.894	12.894	+20.000		2.000
14.715	14.715	2.65		12.065	4.618	4.618	+24.618		2.000
14.641	14.641	2.70		11.941	15.382	15.382	+40.000		2.000
14.571	14.571	2.76		11.801	20.000	20.000	+60.000		2.000
14.571	14.571	2.76		11.801	20.000	20.000	+80.000		2.000
14.571	14.571	2.76		11.801	19.890	19.890	NO. 34		2.000
14.571	14.571	2.76		11.801	7.008	7.008	+20.000		2.000
14.571	14.571	2.76		11.801	12.092	12.092	EBC 4-1		2.000
14.571	14.571	2.76		11.801	20.000	20.000	+40.000		2.000
14.571	14.571	2.76		11.801	20.000	20.000	+60.000		2.000
14.571	14.571	2.76		11.801	20.000	20.000	+80.000		2.000
14.571	14.571	2.76		11.801	20.000	20.000	NO. 35		2.000
14.571	14.571	2.76		11.801	20.000	20.000	+20.000		2.000
14.571	14.571	2.76		11.801	20.000	20.000	+40.000		2.000
14.571	14.571	2.76		11.801	20.000	20.000	+60.000		2.000
14.571	14.571	2.76		11.801	20.000	20.000	+80.000		2.000
14.571	14.571	2.76		11.801	20.000	20.000	NO. 36		2.000
14.571	14.571	2.76		11.801	20.000	20.000	+20.000		2.000
14.571	14.571	2.76		11.801	20.000	20.000	+40.000		2.000
14.571	14.571	2.76		11.801	20.000	20.000	+60.000		2.000
14.571	14.571	2.76		11.801	20.000	20.000	+80.000		2.000
14.571	14.571	2.76		11.801	20.000	20.000	NO. 37		2.000
14.571	14.571	2.76		11.801	20.000	20.000	+20.000		2.000
14.571	14.571	2.76		11.801	20.000	20.000	+40.000		2.000
14.571	14.571	2.76		11.801	20.000	20.000	+60.000		2.000
14.571	14.571	2.76		11.801	20.000	20.000	+80.000		2.000
14.571	14.571	2.76		11.801	20.000	20.000	EP		2.000

西宮浜JCT 縦断図 (3) 名湾地先OFFランプ S=nonscale

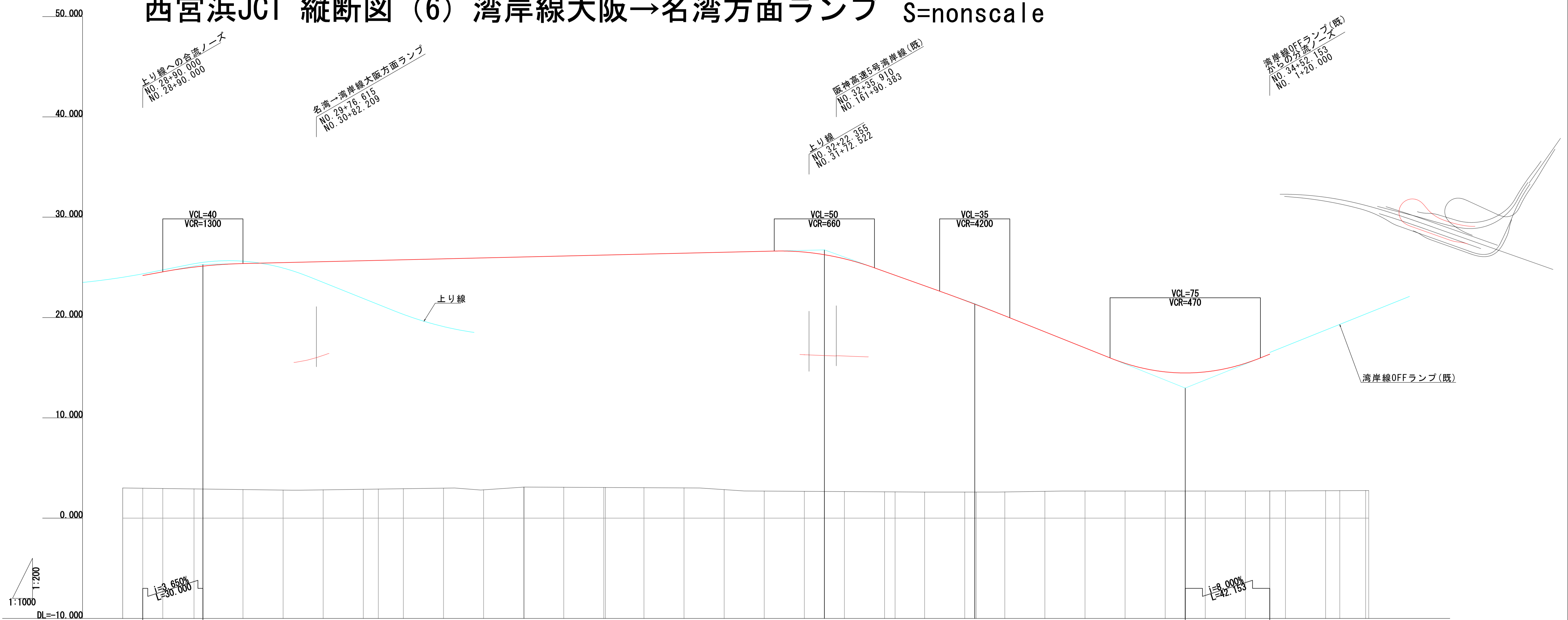


勾配	計画高	地盤高	切土高	盛土高	追加距離	単距離	測点	曲率	片り勾り配
	16.995	2.90		14.095	0.000	0.000	BC 1-0		
	15.795	2.90		12.895	20.000	20.000	+20.000		
	15.089	2.90		12.189	32.089	12.089	BC 2-0		
	14.595	2.90		11.695	40.000	7.911	+40.000		
	13.395	2.90		10.495	60.000	20.000	+60.000		
	12.754	2.90		9.854	70.628	10.628	KA 3-1		
	12.246	2.90		9.346	80.000	8.142	+80.000		
	11.875	2.90		8.975	90.000	10.000	+90.000		
	11.686	2.90		8.786	100.000	10.000	NO.1		
	11.715	2.90		8.815	120.000	20.000	+20.000		
	11.805	2.80		8.805	140.888	20.888	KE 3-1		
	11.875	2.80		9.075	160.000	18.142	+60.000		
	11.913	2.80		9.113	169.512	9.512	KE 3-2		
	11.955	2.80		9.155	180.000	10.488	+80.000		
	11.615	3.19		8.425	200.000	20.000	NO.2		
	10.435	2.90		7.535	220.000	20.000	+20.000		
	8.835	2.90		5.935	240.000	20.000	+40.000		
	8.045	2.90		5.145	249.869	9.869	KA 3-2		
	7.235	2.90		4.335	260.000	10.131	+60.000		
	5.635	2.90		2.735	280.000	20.000	+80.000		
	4.162	2.70		1.462	300.000	20.000	NO.3		
	3.836	2.90		0.936	306.500	6.500	+6.500		
	3.444	2.90		0.544	320.000	13.500	+20.000		
	3.298	2.90		0.398	340.000	20.000	+40.000		
	3.168	2.90		0.268	360.000	20.000	+60.000		
	3.038	2.90		0.138	380.000	20.000	+80.000		
	2.909	2.90	0.049	0.009	400.000	20.000	NO.4		
	2.851	2.90	0.121		409.000	9.000	BC 4-0		
	2.779	2.90			420.000	11.000	+20.000		
	2.679	2.80	0.179		440.000	20.000	+40.000		
	2.640	2.80	0.179		446.829	6.829	BC 5-0		
	2.621	2.60		0.021	460.000	14.171	+60.000		
	2.601	2.80		0.001	480.000	20.000	+80.000		
	2.600	2.80			480.529	0.529	EP		

西宮浜JCT 縦断図 (5) 名湾→湾岸線大阪方面ランプ S=nonscale



西宮浜JCT 縦断図 (6) 湾岸線大阪→名湾方面ランプ S=nonscale



勾配	計画高	地盤高	切土高	盛土高	追加距離	単距離	測点	曲率	片り勾配
3.00	24.190	3.00			0.000-2880.000	0.000	BC 1-0		No. 28+90.000
2.98	24.190	2.98	21.210	21.210	10.000-2890.000	10.000	+90.000	L=35.575 R=200.000	No. 29+47.000
2.95	24.555	2.95	21.605	21.605	10.000-2900.000	10.000	NO. 29		No. 29+47.000
2.91	25.027	2.91	22.117	22.117	15.575-2915.575	15.575	ERC 1-1	L=91.925 R=400.000	No. 30+47.900
2.90	25.126	2.90	22.226	22.226	4.425-2920.000	4.425	+20.000		No. 30+47.900
2.85	25.379	2.85	22.529	22.529	20.000-2940.000	20.000	+40.000		No. 30+47.900
2.80	25.473	2.80	22.673	22.673	20.000-2960.000	20.000	+60.000		No. 30+47.900
2.82	25.567	2.82	22.747	22.747	20.000-2980.000	20.000	+80.000		No. 30+47.900
2.87	25.661	2.87	22.791	22.791	20.000-3000.000	20.000	NO. 30		No. 30+47.900
2.90	25.696	2.90	22.796	22.796	7.500-3007.500	7.500	ERC 1-2		No. 30+47.900
2.93	25.755	2.93	22.825	22.825	12.500-3020.000	12.500	+20.000		No. 30+47.900
2.98	25.849	2.98	22.869	22.869	20.000-3040.000	20.000	+40.000		No. 30+47.900
2.82	25.943	2.82	23.123	23.123	20.000-3060.000	20.000	+60.000		No. 30+47.900
3.00	26.037	3.00	23.847	23.847	20.000-3080.000	20.000	+80.000		No. 30+47.900
3.08	26.131	3.08	23.051	23.051	19.725-3100.000	19.725	NO. 31		No. 30+47.900
3.05	26.225	3.05	23.178	23.178	20.000-3120.000	20.000	+20.000		No. 30+47.900
3.03	26.318	3.03	23.288	23.288	19.225-3140.000	19.225	+40.000		No. 30+47.900
3.01	26.412	3.01	23.402	23.402	20.000-3160.000	20.000	+60.000		No. 30+47.900
2.84	26.506	2.84	23.666	23.666	20.000-3180.000	20.000	+80.000		No. 30+47.900
2.70	26.600	2.70	23.900	23.900	20.000-3200.000	20.000	NO. 32		No. 30+47.900
2.67	26.523	2.67	23.853	23.853	20.000-3220.000	20.000	+20.000		No. 30+47.900
2.66	26.265	2.66	23.605	23.605	10.000-3230.000	10.000	+30.000		No. 30+47.900
2.65	25.854	2.65	23.204	23.204	10.000-3240.000	10.000	+40.000		No. 30+47.900
2.63	24.594	2.63	21.964	21.964	20.000-3260.000	20.000	+60.000		No. 30+47.900
2.62	24.218	2.62	21.598	21.598	5.250-3265.250	5.250	KE 2-2		No. 30+47.900
2.60	23.162	2.60	20.562	20.562	14.750-3280.000	14.750	+80.000		No. 30+47.900
2.60	21.712	2.60	19.112	19.112	20.000-3300.000	20.000	NO. 33		No. 30+47.900
2.60	21.219	2.60	18.746	18.746	0.000-3305.000	0.000	+5.000		No. 30+47.900
2.61	20.172	2.61	17.562	17.562	14.250-3320.000	14.250	+20.000		No. 30+47.900
2.67	18.573	2.67	15.903	15.903	20.000-3340.000	20.000	+40.000		No. 30+47.900
2.70	16.973	2.70	14.273	14.273	20.000-3360.000	20.000	+60.000		No. 30+47.900
2.70	15.433	2.70	12.733	12.733	20.000-3380.000	20.000	+80.000		No. 30+47.900
2.70	14.579	2.70	11.879	11.879	20.000-3400.000	20.000	NO. 34		No. 30+47.900
2.70	14.473	2.70	11.773	11.773	10.000-3410.000	10.000	+10.000		No. 30+47.900
2.70	14.579	2.70	11.879	11.879	10.000-3420.000	10.000	+20.000		No. 30+47.900
2.70	15.433	2.70	12.733	12.733	20.000-3440.000	20.000	+40.000		No. 30+47.900
2.71	16.345	2.71	13.635	13.635	12.153-3452.153	12.153	BC 3-0		No. 30+47.900
2.72	16.345	2.72	13.635	13.635	7.847-3460.000	7.847	+60.000		No. 30+47.900
2.73	16.345	2.73	13.635	13.635	20.000-3480.000	20.000	+80.000		No. 30+47.900
2.74	16.345	2.74	13.635	13.635	7.093-3487.093	7.093	BC 4-0		No. 30+47.900
2.75	16.345	2.75	13.635	13.635	12.907-3500.000	12.907	NO. 35		No. 30+47.900
			29.000	29.000	29.000-3520.000	29.000	EF#20.000		No. 30+47.900